

CONVEYOR PULLEYS

HEAVY DUTY

- Over 7,000 SKU's
- On the Shelf in 17 Branches
- Manufactured in 6 Regional Locations

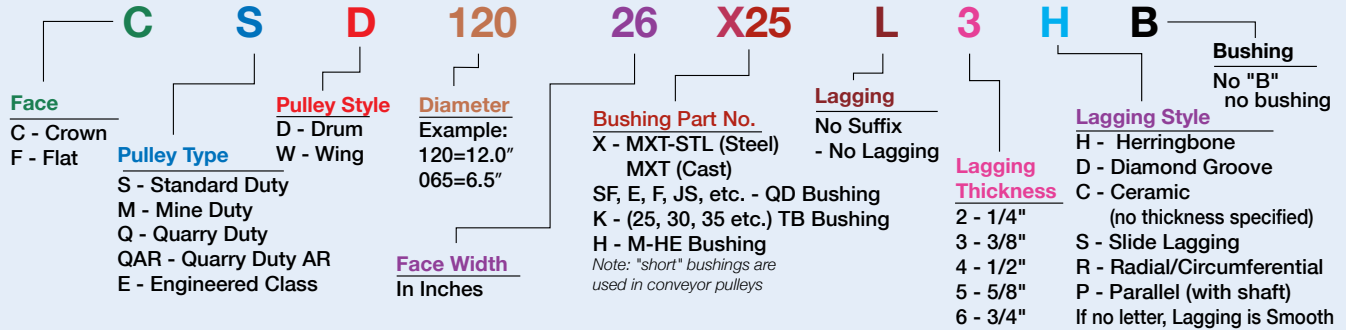
Martin SPROCKET & GEAR, INC.

www.martinsprocket.com • 817-258-3000

"The One You Rely On!"

Martin's product line meets the demanding requirements of industries such as: sand and gravel quarries, coal mines, unit packaging, food processing, and recycling. These pulleys are manufactured to the same quality standards you have come to expect from Martin. We offer exceptional delivery times on stock and made-to-orders.

PART NOMENCLATURE



Drum Pulleys

Martin now manufactures heavy duty pulleys offering maximum protection against premature failure in harsh applications. This specialty product line is available as stock, and made-to-order with exceptional delivery time.

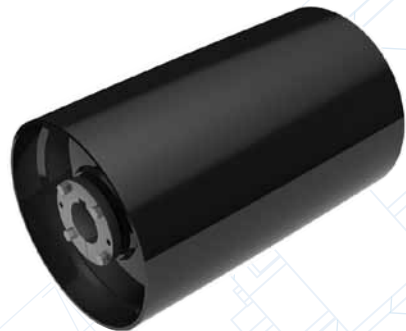


Machined Drum Pulleys

- 4" to 10-3/4" diameter
- Manufactured from heavy wall pipe or tubing
- Several hub/bushing systems available
- Machined OD's for better belt tracking and less vibration
- Crowned Face or Flat Face

Standard Duty Drum Pulleys

- 12" to 60" Diameter
- 1/4" minimum Center Plates
- 3/8" minimum End Disc
- Several Hub/Bushing systems available



Mine Duty Drum Pulleys

- 10" to 60" Diameter
- 1", 1-1/4" and Heavier End Discs
- Several Hub/Bushing Systems Available

- 3/8" thru 1" Rims
- 3/8" Center Plates
- Double Sub-Arc Weldments

Quarry Duty Drum Pulleys

- 12" to 60" Diameter
- 1-1/4" and Heavier End Discs
- Full Depth Key Bushings
- 1/2" thru 1" Rims
- 1/2" Center Plates
- Double Sub-Arc Weldments



Heavy Duty Conveying

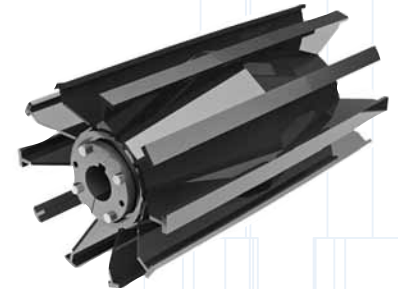
Martin

Wing Pulleys

Martin's unique "End Pipe" design offers superior strength — prevents wing folding as well as better protection against hub-weld fatigue..

Standard Duty Wing Pulleys

- Available in 6" thru 60" diameter
- Minimum 3/8" x 1-1/4" Contact Bars
- Minimum 1/4" thick wings
- Minimum 10 ga. Gussets



Mine Duty Wing Pulleys

- Available in 8" thru 60" diameter
- Minimum 5/8" x 1-1/2" contact bars
- Minimum 3/8" thick wings
- Minimum 1/4" Gussets
- Several Hub/Bushing systems available

Quarry Duty Wing Pulleys

- Available in 10" thru 60" diameter
- Minimum 3/4" x 2" contact bars
- Minimum 3/8" thick wings
- Minimum 5/16" Gussets
- Features full depth keyed bushings and hubs for higher clamping to shaft.



Quarry Duty "AR" Wing Pulleys

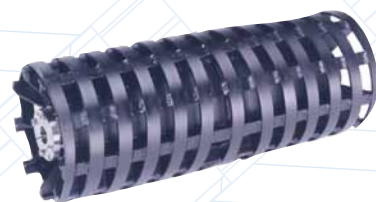
- Available in 10" thru 60" diameter
- Minimum 3/4" x 2" contact bars "AR 400" abrasive resistant steel
- Minimum 1/2" thick wings
- Minimum 5/16" Gussets
- Features full depth keyed bushings and hubs for higher clamping to shaft.

Special Construction Pulleys

Martin has the fastest turnaround times in the industry on MTO pulleys. Below are just a few examples of custom pulleys *Martin* routinely manufactures.

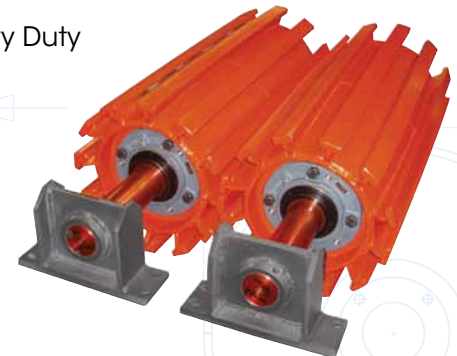
Spiral Pulleys

- Both Drum & Wing construction
- Reverse Helixes wrapped around outer diameter
- Pulley Flat Bar is under the Spiral Wrap for added protection
- Larger welds provide a better bond between the wrap and pulley
- Designed to remove material from belt
- Available in Standard, Heavy, Mine and Quarry Duty



"DSP" - Dead Shaft Pulleys

- Aggressive Construction
- Piloted flange cartridge - easily interchangeable with other brands
- Standard "off-the-shelf" Integral Bearing
- 3/4" Thick Fabricated Steel Mounting Pedestals
- Increased Diameter Shafting Behind Bearings to Reduce Deflection
- Available in Standard Duty, Mine Duty, Quarry Duty and Quarry Duty "AR" construction - Wing or Drum Style



V-Guide Drum Pulleys

- Crowned Face or Flat Face available in A, B, or C Groove construction
- 4" to 10" Diameter
- Several Hub/Bushing Systems Available
- Manufactured from Heavy Wall Pipe or Tubing
- Machined OD's for Better Belt Tracking and less vibration



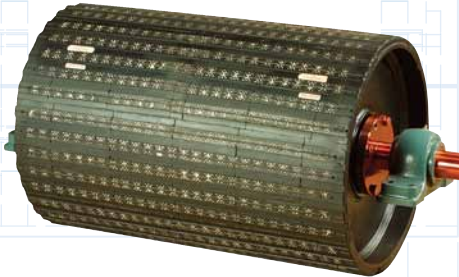
Lagging

Martin's Lagging is designed to meet the demands of your application. We offer Ceramic Lagging custom fit to your application, vulcanized rubber, cold bond lagging and strip lagging.

Other lagging compounds such as Urethane, EPDM White Food Grade FDA approved rubber, SOF (static conductive/oil resistant/flammable resistant) and many other lagging products are also available.

Vulcanized Rubber Lagging

- 4" through 72" Diameter in any thickness
- Available in Smooth, Herringbone or Diamond groove pattern
- Abrasive resistant



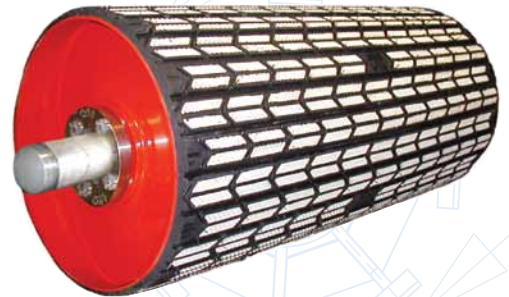
Ceramic Lagging

- Three to five times higher coefficient of friction than rubber to rubber
- Optimum tile positioning for combatting tile displacement created by belt pull
- Maximum tile size for increased surface area
- Improved wear characteristics



VC-Lagg (Vulcanized Ceramic Lagging)

- 60 Durometer rubber with high tensile rubber
- No sharp edges on tiles
- MSHA Compounds available
- Water relief grooves between all tiles
- Available in any size.



Take-Up Frames

Martin's Take-Up frames are fabricated from steel, offering superior strength and durability in the most rugged conditions.

- Available in Light Duty, Top Angle, Heavy Duty, Center Pull, Wide Slot & Tube Take-Up styles
- Accommodate bearing shafts sizes from 1" to 5-15/16"

- Available in standard travel lengths from 9" to 60"
- Stainless Steel, ACME thread & MTO lengths available
- Suitable for most manufacturers' housing styles including center pull wide slot, pillow block and top angle protected screw

Bearings

Martin offers a full line of roller bearings and stocks most common sizes. We can supply SAF, Type E, and Ball Bearing units in Pillow Block, Flange Block & Take-Up Housing styles.

- Type E Pillow Block Bearings
 - Bore Range from 1-7/16" to 4-15/16" Diameter
- Split Housed Spherical Pillow Block Bearings
 - Stocked from 1-7/16" to 8" Diameter

Bushings

Martin's MXT® & MXT-STL® Bushings are available from stock to fit all popular pulley sizes. Both the MXT & MXT-STL Bushing offers a 2" per foot taper, which reduces end disc pre-stressing, as well as increasing clamping force.



Custom Shafting

Need a custom shaft? Let Martin analyze your application and provide you a custom solution.



Martin has 31 North American Manufacturing facilities. To find the one closest to you, call our Corporate Office at 817-258-3000 or visit us on the web at www.martinsprocket.com